

LUMA

Sunshine North



Artist Impression

KEON

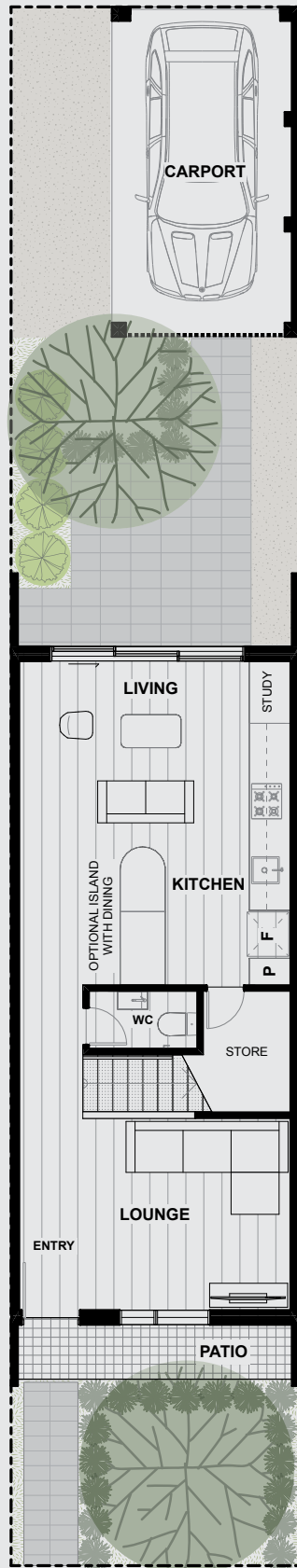
URBAN

Modern with a classic design, Keon is a versatile residence with the convenience of a carport accessed by a private rear laneway. Looking out to a lush rear garden, Keon's spacious ground floor cleverly integrates kitchen and dining with light-filled family living and a convenient study nook. With plenty of space to entertain including separate

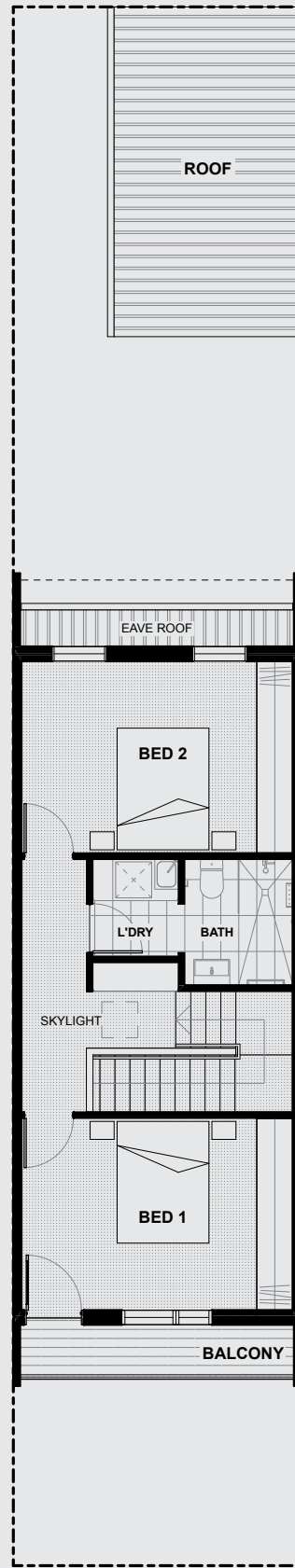
rumpus room at the front of the home makes it ideal to retreat to for a movie or give the kids some space to spread out. Upstairs, generously sized bedrooms provide room to grow and plenty of storage, as well as a private outdoor terrace overlooking a landscaped front garden. Keon is a home designed for individuals to easily live together.



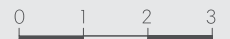
GROUND FLOOR	52m ²
FIRST FLOOR	52m ²
TERRACE	4m ²
PATIO	4m ²
TOTAL	112m²
CARPORT	21m ²
OUTDOOR	28m ²



GROUND FLOOR



FIRST FLOOR



Sunshine North

DISPLAY SUITE
247 St Albans Road,
Sunshine North

P: 03 8317 3725

lumaliving.com.au

@lumaliving.vic

@lumaliving.vic

A project by



The pictures in this brochure are indicative, for illustrative purposes only, and are subject to change. The images in this brochure may be enhanced and may include some artistic licence. They are provided only to generally convey the planned look and feel of the home. Any dimensions/sizes indicated are nominal only with construction to be within allowable tolerances. While best endeavours have been used to provide that information is accurate, prospective purchasers should not rely on the information contained herein. Existing trees, landscaping and furniture layouts are representational only and furniture is not included. To the extent permitted by law (including the Australian Consumer Law), all information in this brochure is provided "as is" without representation or warranty of any kind as to the accuracy, completeness or suitability for a particular purpose and Development Victoria has no liability to any person under contract, tort, common law or equity or otherwise for any loss, expense, action, liability or damage which may arise from the information contained in this brochure. COPYRIGHT: No part of this work, including the designs and images contained in this brochure, may be reproduced or copied in any form or by any means (graphic, electronic, or mechanical, including photocopying, recording, taping or information retrieval systems) without the written permission of Development Victoria.