



Sunshine North

LUMALIVING.COM.AU | 03 8317 3725 | 247 ST ALBANS ROAD, SUNSHINE NORTH



mdg



The pictures in this brochure are indicative, for illustrative purposes only, and are subject to change. The images in this brochure may be enhanced and may include some artistic licence. They are provided only to generally convey the planned look and feel of the home. Any dimensions/sizes indicated are nominal only with construction to be within allowable tolerances. While best endeavours have been used to provide that information is accurate, prospective purchasers should not rely on the information contained herein. Existing trees, landscaping and furniture layouts are representational only and furniture is not included. To the extent permitted by law (including the Australian Consumer Law), all information in this brochure is provided "as is" without representation or warranty of any kind as to the accuracy, completeness or suitability for a particular purpose and Development Victoria has no liability to any person under contract, tort, common law or equity or otherwise for any loss, expense, action, liability or damage which may arise from the information contained in this brochure. COPYRIGHT: No part of this work, including the designs and images contained in this brochure, may be reproduced or copied in any form or by any means (graphic, electronic, or mechanical, including photocopying, recording, taping or information retrieval systems) without the written permission of Development Victoria.



Sunshine North

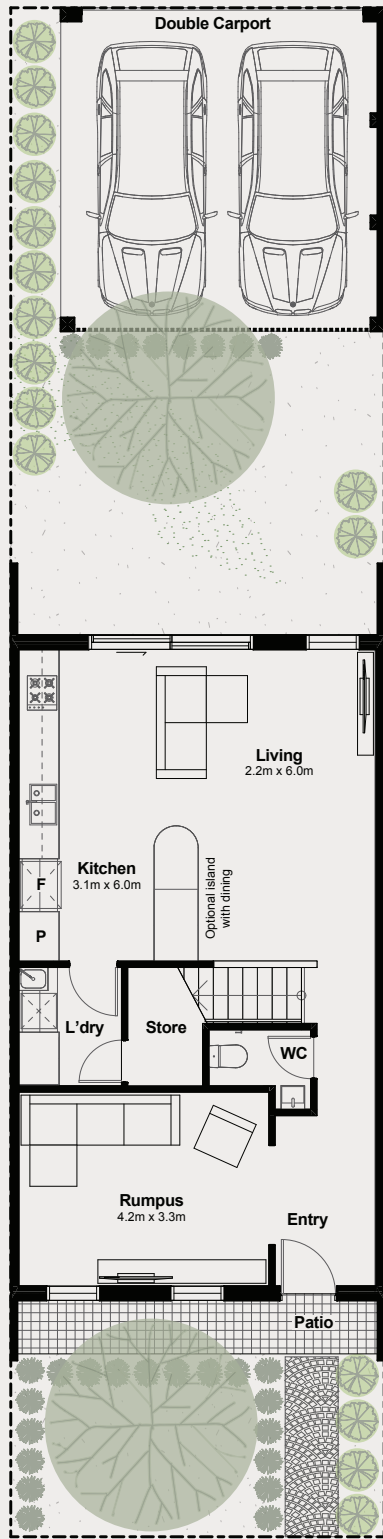
URBAN | JEON



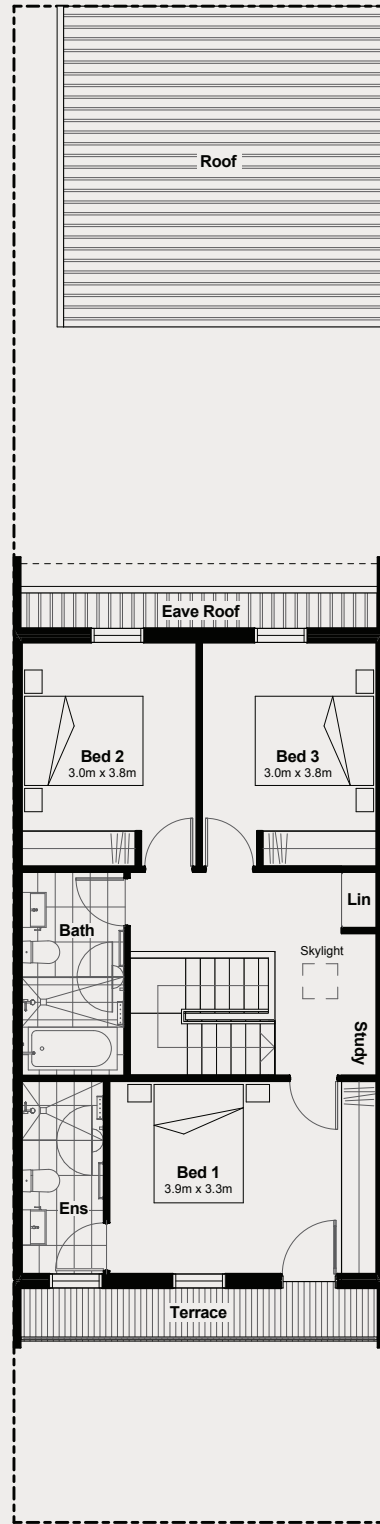
Artist Impression

INTRODUCING JEON.

// Designed for modern family life, Urban homes combine the flexibility of open plan living areas with generous outdoor space.



GROUND FLOOR



FIRST FLOOR



3



2



1



2



5kW

GROUND FLOOR	69m ²
FIRST FLOOR	69m ²
TERRACE	6m ²
PATIO	6m ²
TOTAL	150m²
CARPORT	33m ²
OUTDOOR	34m ²

Generous in size, Jeon offers modern living with a formal sitting room, open-plan kitchen and living space to the rear and large entrance lobby, Jeon provides plenty of options for extended family living. With dining and living areas including a large entertainer's kitchen opening directly onto a private landscaped garden, an abundance of natural light filters into the home offering brilliant flexibility for all

seasons. The first floor features a generously sized master bedroom with ensuite configured to let the sunlight stream in, 2 large bedrooms at the rear, and a convenient study nook with skylight. With 2 bathrooms, a ground floor powder room, plenty of storage and a double carport accessed by a private rear laneway, Jeon presents scale, comfort and convenience in equal measure.