



Sunshine North

URBAN | IKON

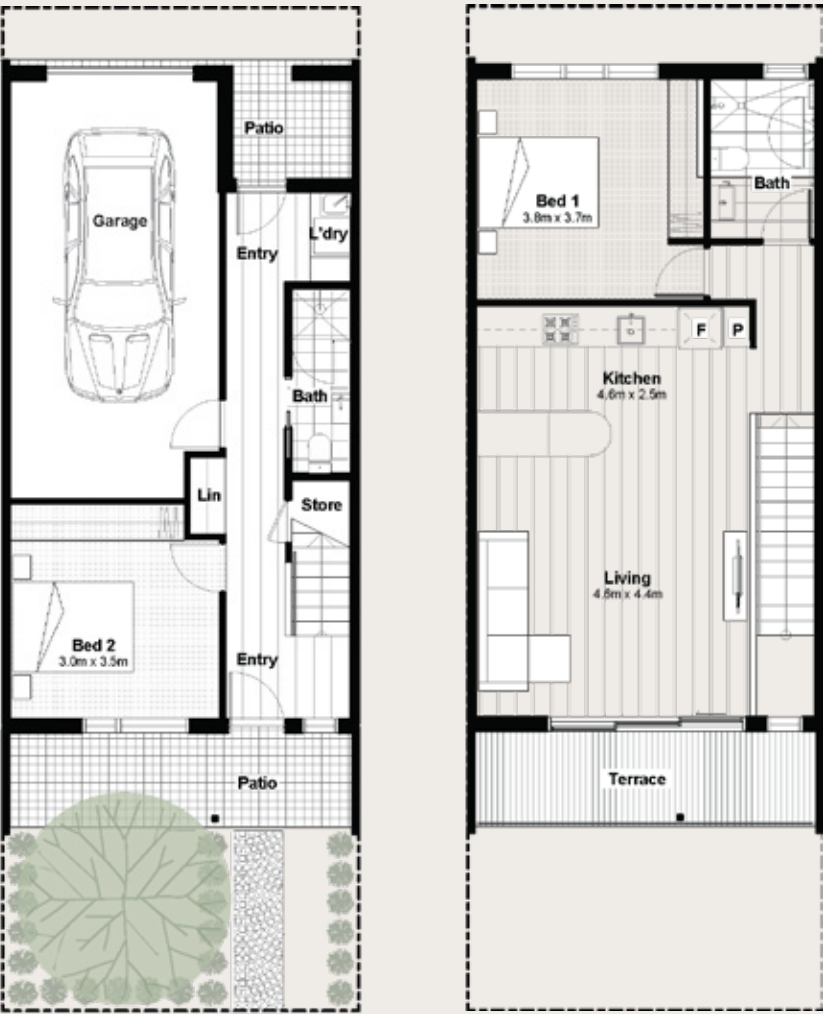
LOT 119



Artist Impression

# INTRODUCING IKON.

// Designed for modern family life, Urban homes combine the flexibility of open plan living areas with generous outdoor space.



GROUND FLOOR FIRST FLOOR



GROUND FLOOR	35m <sup>2</sup>
FIRST FLOOR	65m <sup>2</sup>
GARAGE	26m <sup>2</sup>
TERRACE	9m <sup>2</sup>
PATIO	15m <sup>2</sup>
<b>TOTAL</b>	<b>150m<sup>2</sup></b>

With a classic design, Ikon offers modern light-filled living spaces. Designed for people on the go, Ikon features an easily accessible internal garage entered via a private rear laneway. With a generous open-plan layout and spacious master bedroom on the first floor, Ikon combines plenty of space with enough room for

everyone to find their own peace and quiet. A private ground floor bedroom looks out to a landscaped garden, while glazing opens the living and dining areas to the light and views of the upstairs outdoor terrace. Ikon provides a contemporary living solution.



Sunshine North

---

LUMALIVING.COM.AU | 03 8317 3725 | 247 ST ALBANS ROAD, SUNSHINE NORTH

---



@lumaliving.vic



@lumaliving.vic

The pictures in this brochure are indicative, for illustrative purposes only, and are subject to change. The images in this brochure may be enhanced and may include some artistic licence. They are provided only to generally convey the planned look and feel of the home. Any dimensions/sizes indicated are nominal only with construction to be within allowable tolerances. While best endeavours have been used to provide that information is accurate, prospective purchasers should not rely on the information contained herein. Existing trees, landscaping and furniture layouts are representational only and furniture is not included. To the extent permitted by law (including the Australian Consumer Law), all information in this brochure is provided "as is" without representation or warranty of any kind as to the accuracy, completeness or suitability for a particular purpose and Development Victoria has no liability to any person under contract, tort, common law or equity or otherwise for any loss, expense, action, liability or damage which may arise from the information contained in this brochure. COPYRIGHT: No part of this work, including the designs and images contained in this brochure, may be reproduced or copied in any form or by any means (graphic, electronic, or mechanical, including photocopying, recording, taping or information retrieval systems) without the written permission of Development Victoria.